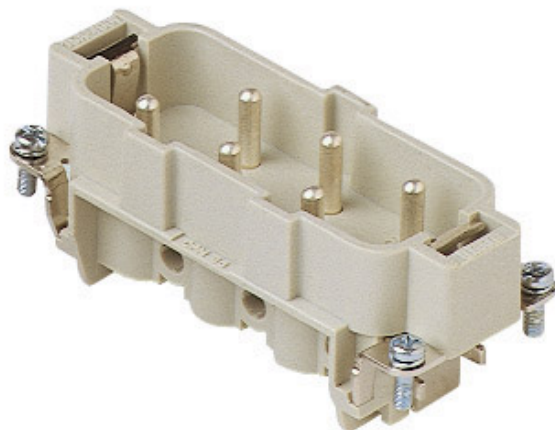



## Product Sheet

**Part Number:** CPM 06



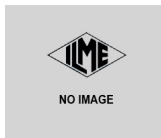
|                                |   |
|--------------------------------|---|
| <b>Family</b>                  | inserts   |
| <b>Version</b>                 | screw terminal connections  |
| <b>Series</b>                  | CP  |
| <b>Product type</b>            | with male contacts  |
| <b>Model</b>                   | male insert   |
| <b>Reference standard</b>      | EN 61984 (2001-11)  |
| <b>Contact type</b>            | silver plated   |
| <b>No. of poles</b>            | 6 poles + $\perp$   |
| <b>Voltage (V)</b>             | 400V/690V   |
| <b>Current (A)</b>             | 35A (A.C./D.C.)   |
| <b>Wire section</b>            | 1,5mm <sup>2</sup> - 6mm <sup>2</sup>   |
| <b>Awg size</b>                | 16 - 10   |
| <b>Quality mark</b>            |                                      |
| <b>IP degree of protection</b> | IP20 degree of protection without enclosure; IP65, IP66, IP67, IP68 (EN 60529) and IP69K (DIN 40050 - 9) with enclosure |
| <b>Fixing centre distance</b>  | size "77.27"  |

The information and the dimensions contained are not binding and may be changed without prior notice.  
The drawing's dimensions are in mm.

**Impulse withstand voltage** 6kV

**Pollution degree** 3

**Notes**



CPF/M 06 inserts

- characteristics according to EN 61984:  
35A 400/690V 6kV 3
- UL, CSA, CCC, GOST certified
- rated voltage according to UL/CSA: 600V
- insulation resistance: > 10 GOhm
- ambient temperature limit: -40 °C ... +125 °C
- are made of self-extinguishing thermoplastic resin UL 94 V0
- mechanical life: > 500 cycles
- contact resistance: < 0,5 mOhm
- inserts with plate, for section conductors:  
1,50 ÷ 6 mm<sup>2</sup> - AWG 16 ÷ 10
- conductors stripping length: 10.5 mm
- terminal screw torque: 1.2 Nm
- enclosures: size 77.27:  
C-TYPE IP65/IP66  
C7 IP67 stainless steel lever  
V-TYPE IP65/IP66 stainless steel lever  
T-TYPE IP65 insulating  
JEI zinc-plated steel lever  
BIG hoods  
W-TYPE aggressive environments  
EMC  
central lever  
IP68
- panel supports: COB

The information and the dimensions contained are not binding and may be changed without prior notice.  
The drawing's dimensions are in mm.